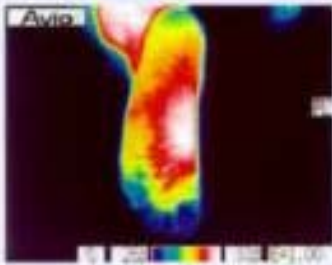


WARM FLOORS How Warm?



INITIALLY

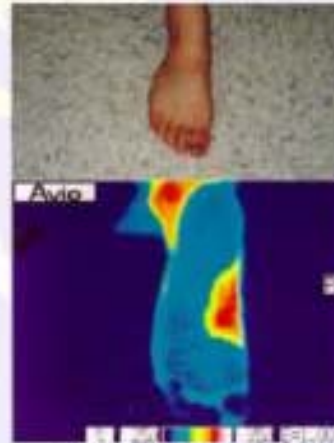
AFTER 1 MINUTE CONTACT



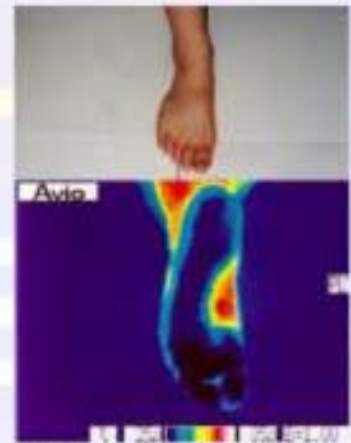
CORK TILES



WOOD PARQUET



VINYL TILES



CERAMIC TILES

- ⊕ TESTS PERFORMED IN JAPAN
- ⊕ CONDITIONS: ROOM 23 +/- 2°C
- ⊕ METHOD: Placing the different materials under a double base of 12 mm of Wood. The initial temperature was measured by an infrared camera. After contact with the different materials for 1 minute, the temperature is measured again.
- ⊕ The Red colour corresponds to the higher temperatures

